

4

3

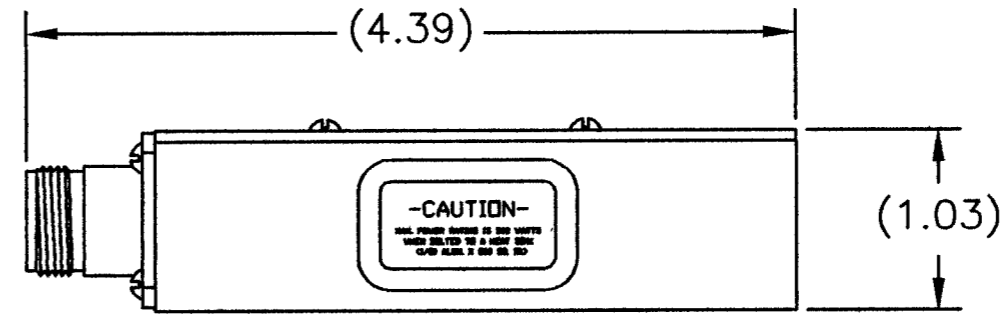
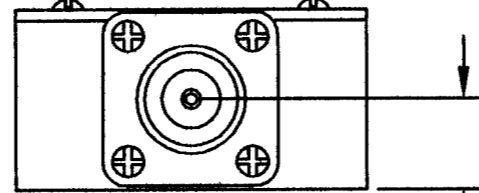
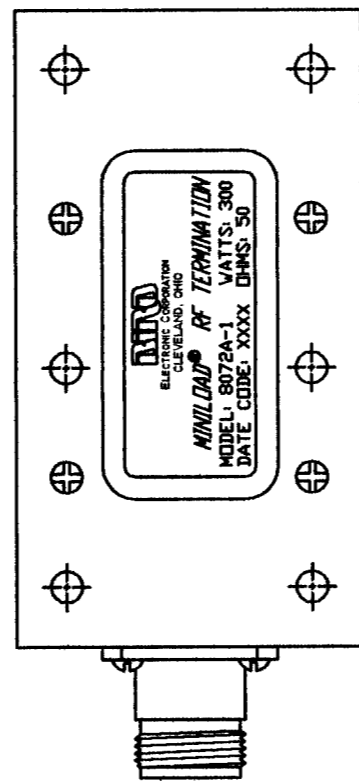
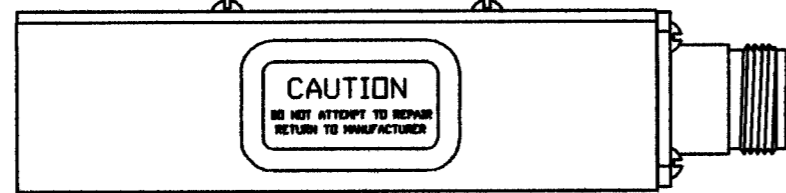
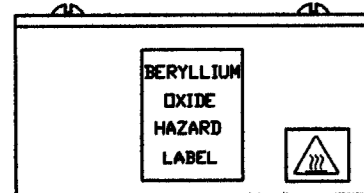
2

1

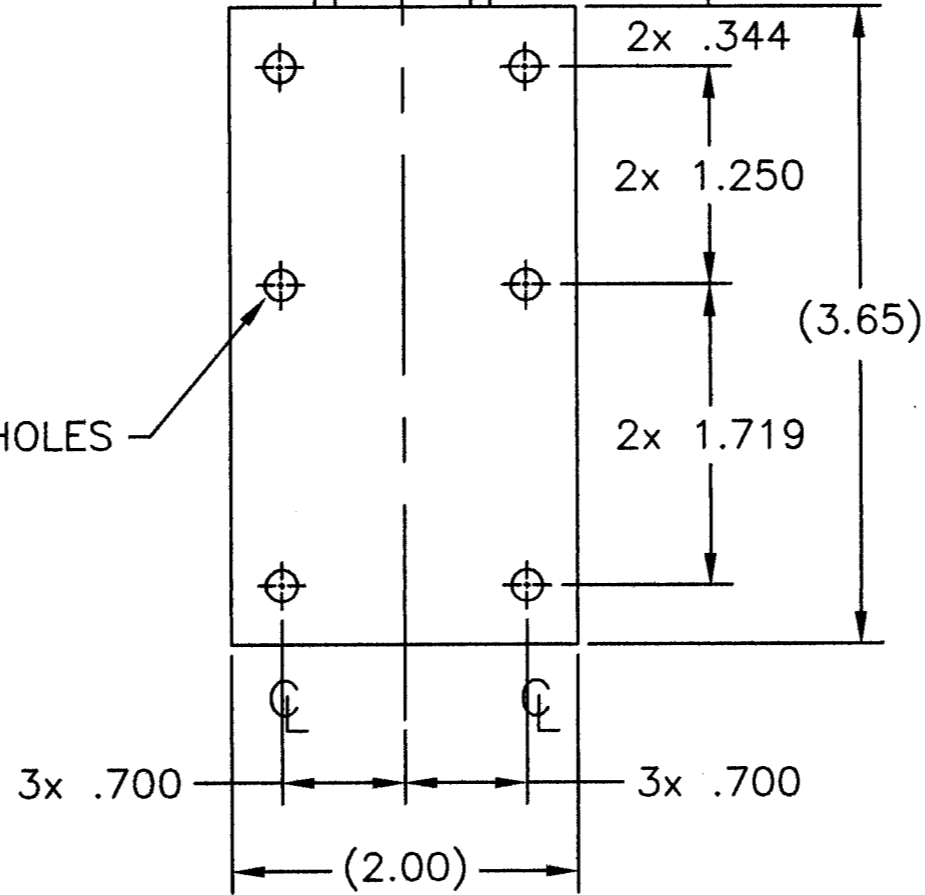
SPECIFICATIONS:

NOMINAL IMPEDANCE: 50 OHMS
 POWER RATING: 300 WATT CONTINUOUS, OR
 3.6kW PEAK POWER PULSE WITH
 100 uSEC MAX PW @ 1 kHz PRR, WHEN
 MOUNTED TO A HEAT SINK CAPABLE
 OF MAINTAINING A CASE TEMPERATURE
 OF 100°C MAX.
 FREQUENCY RANGE AND VSWR: DC TO 1 GHz AT 1.10:1 MAX.
 1 GHz TO 2.5 GHz AT 1.20:1 MAX.
 AMBIENT TEMPERATURE: -40°C TO +55°C
 CONNECTOR: N-TYPE FEMALE, TRI-ALLOW PLATED
 HOUSING: ALUMINUM, TRI-ALLOW PLATED (NON-MAGNETIC)
 NOMINAL SIZE: 4-25/64" X 2" X 1-1/32"
 WEIGHT: 12 OZ.
 MECHANICAL TOLERANCES: ±0.015

REVISIONS			DWG. NO.	SHEET	REV
ZONE	REV	DESCRIPTION	DATE	APPROVED	
	A	ECN #0147	2-4-97	MPJ	
	B	ECN #0177	7-24-97	MPJ	
	C	ECN #0270	2-26-01	MPJ	



6x Ø.181 THRU HOLES



DIMENSIONS HEREON ARE FOR CUSTOMER
 CONVENIENCE AND REFERENCE ONLY.
 TOLERANCE TO BE APPLIED ONLY WHERE
 INDIVIDUALLY STATED ON THE RESPECTIVE
 DIMENSION. -DO NOT SCALE DRAWING-

NOTES:

- ☒ 1. PART MUST BE BURR FREE.
- ☒ 2. CHAMFER 1st THREAD.
- ☒ 3. 63 MICROINCH UNLESS OTHERWISE SPECIFIED.
- ☐ 4. PER BPS _____
- ☒ 5. .005 RADIUS ON ALL INSIDE & OUTSIDE CORNERS UNLESS OTHERWISE SPECIFIED.

UNLESS OTHERWISE SPECIFIED
 DIMENSIONS ARE IN INCHES
 TOLERANCES ARE:
 FRACTIONS DECIMALS ANGLES
 ± 1/64 .XXX ± .010 ± 30'
 .XXX ± .005 ± 30'

MILLIMETERS
 .X = ± .4
 .XX = ± .12

THIS DRAWING IS THE PROPERTY OF THE BIRD ELECTRONIC CORPORATION. THE DESIGNS AND SPECIFICATIONS DISCLOSED HEREON ARE PROPRIETARY AND SHALL NOT BE REPRODUCED, NOR COPIED, NOR USED AS THE BASIS FOR THE MANUFACTURE OR SALE OF APPARATUS OR DEVICES WITHOUT THEIR EXPRESS WRITTEN CONSENT.



APPROVALS		DATE
DRAWN	D.M.RINK	11-8-02
CHECKED		
APPROVED	MPJ	1-13-03

TITLE			
TERMINATION, CONDUCTION COOLED N-TYPE FEMALE, 300W			
SIZE	FSCM NO.	DWG. NO.	REV
C	70998	8072A-1	C
SCALE	1:1	COMM CODE	LD1
SHEET		1 OF 1	

4

3

2

1